



Software Installation and Licensing Frequently Asked Questions

Table of Contents

Software Availability and Download Questions	4
1. How can I obtain Actel Libero IDE or Designer Software?	4
2. Which Download Method should I use?	4
3. What software tools come with Libero IDE?	4
4. What software tools must be downloaded separately?	4
5. What are the System Requirements for Libero IDE?	4
6. Are there any special requirements to use Libero IDE on Linux?	5
7. Does Libero IDE run on Ubuntu Linux?	5
8. Is Actel Libero IDE software free?	5
9. Do I have to use the Actel Editions of Synplify and ModelSim to design for an Actel Device? ...	5
10. Where can I find a Libero IDE tutorial or documentation?	5
Software License Availability and Request Questions	6
11. Which software tools require a license to run?	6
12. Which software tools will work without a license?	6
13. What license types are available?	6
14. Are the licenses free?	7
15. What is a Node-Locked License?	7
16. What is a Floating license?	7
17. Which HostID should I use?	7
18. What happens if I need to change my HostID?	7
19. How do I obtain a license?	7
20. What are the restrictions on a Gold license?	7
21. What are the restrictions on an Eval license?	8
22. My license is about to expire, what should I do to continue using the Libero IDE software?	8
23. How can I obtain the License Server Daemons?	8
24. Can I use a Node-Locked license on a remote terminal?	8
25. What are Floating License Seats?	8
26. Do I need a new license for each version of Libero IDE installed on my computer?	8
27. How can I get an Actel DeskTop license?	8
28. How many seats can I have on a node-locked license?	8
Software Installation Questions	9
29. Can I install the Libero IDE Service Packs to get the complete software installation?	9
30. I cannot find the Actel device I need in the Installation Components list. Why?	9
31. Can the Libero IDE be installed in any drive or folder?	9
32. The Libero IDE Installer says I have registry errors; how can I fix them?	10
33. How can I uninstall the Libero IDE software?	10
34. Can I have more than one version of Libero IDE installed on the same computer?	10
35. The Libero IDE Installer closes before the installation is complete, what can I do?	10
36. Does Actel provide a silent installer for Libero IDE?	10
37. Do I need Administrative Privileges to install Libero IDE?	10

Software Startup Questions	11
38. Why can't I select the required Actel Device in the New Project Wizard?	11
39. How do I get Libero IDE to launch on Linux?	11
40. The Actel Software does not start when I launch it, what can I do?	11
Software License Setup Questions.....	12
41. How do I set up my Floating license (or) Node-Locked license?	12
42. Which computer should be the License Server?.....	12
43. Should I install Libero IDE on the License Server?.....	12
44. How do I start the License Server?	12
45. How do I start the License Server and have the output saved in a Log File?.....	12
46. My License Server has multiple licenses for the same software, can these licenses be merged?.....	12
47. Do I need Administrative Privileges to modify an Environment Variable?	12
48. I've followed the License Setup Instructions, but still get a Checkout Error, what can I do?	13

Software Availability and Download Questions

1. How can I obtain Actel Libero IDE or Designer Software?

- Download the Latest Software Releases from www.actel.com/download/default.aspx
- You must first sign in. If you have already created an actel.com [Customer Portal](#) account, simply enter your username and password. If you do not have an actel.com user account, click **New user**.
- You can also request the Free software DVD from www.actel.com/techdocs/litrequest/default.aspx

2. Which Download Method should I use?

There are two ways to download the Libero IDE through HTTP and FTP.

When using the HTTP download method, you must use the supplied Download Manager plug-in. It ensures the complete download of all files, including the Web Install Client. The Download Manager plug-in follows the standard plug-in installation convention. The Download Manager browser plug-in must be installed in order to download from this site.

The Actel Download Manager provides faster download speeds with the ability to pause/resume downloading; it requires that pop-ups be enabled for the download site. If you have trouble using the HTTP download method or cannot install the Actel Download Manager due to your local security policies, then use the FTP download method.

3. What software tools come with Libero IDE?

- Synopsys Synplify/Synplify Pro Actel Edition
- Mentor Graphics ModelSim Actel Edition
- Actel Designer (Includes SmartTime, SmartPower, MultiView Navigator)
- SynaptiCAD WaveFormer Lite (prior to Dec 1st, 2009)
- Actel ViewDraw
- Actel FlashPro (Standalone download available)
- Actel Silicon Explorer (Standalone download available)
- Actel Firmware Catalog (Standalone download available)
- Actel Core Catalog of Basic Blocks and IP Cores

4. What software tools must be downloaded separately?

- Actel SoftConsole
- Actel Silicon Explorer
- Synopsys Symphony HLS Actel Edition
- Synopsys Identify Actel Edition
- Mentor Graphics Precision RTL
- Actel CoreConsole

5. What are the System Requirements for Libero IDE?

Please refer the following link for the system requirements.

www.actel.com/products/software/libero/sysreqs.aspx#system

6. Are there any special requirements to use Libero IDE on Linux?

Aside from the System Requirements, it may be necessary to:

- install the OPENMOTIF Graphical Library
- run the command: `export DISPLAY=:0`
- run the command: `actel_wuclean -R`

Note: you might also have to install the X11 Fonts if your system does not have the required fonts installed.

7. Does Libero IDE run on Ubuntu Linux?

Actel does not currently support Ubuntu Linux. Theoretically speaking, since Ubuntu Linux is similar to Red Hat Linux, it may be possible to run Libero IDE on Ubuntu. From previous customer feedback, the following steps were required to get Libero IDE to run on Ubuntu:

- install the OPENMOTIF Graphical Library
- change the file `/etc/gdm/gdm.conf` line 267: from "DisallowTCP=true" to "DisallowTCP=false"
- run the command: `export DISPLAY=:0`
- run the command: `actel_wuclean -R`

You may also have to install the X11 Fonts if your system does not have the required fonts installed.

8. Is Actel Libero IDE software free?

Yes, you can download the software from the following link

(www.actel.com/download/software/libero/default.aspx). Libero IDE also needs a Software License to run. Some licenses are free and some require purchase. Please refer to the table on the webpage below to learn about available License Types:

www.actel.com/products/software/libero/licensing.aspx

9. Do I have to use the Actel Editions of Synplify and ModelSim to design for an Actel Device?

The Actel Editions of Synplify and ModelSim have been tested by Actel to ensure that they function well with the version of Libero IDE and Designer with which they are bundled. However, it is not mandatory that you use the Actel Editions of Synplify and ModelSim to design for an Actel Device. If you have a licensed copy of the Standard Editions of Synplify or ModelSim, they can be used instead. Please note that the Actel Device Libraries for Simulation will have to be compiled by the standalone version of ModelSim used for simulation. Please refer to the following document for Library Compile Instructions:

www.actel.com/documents/ModelSim_Compil_Ins.pdf

Library compilation is not required when using the Actel Edition of ModelSim bundled with a given version of Libero IDE.

10. Where can I find a Libero IDE tutorial or documentation?

Tutorials and Online Training Webcasts can be found on at www.actel.com/support/training/default.aspx

Software user's guides and manuals can be found at:

www.actel.com/techdocs/manuals/default.aspx

Software License Availability and Request Questions

11. Which software tools require a license to run?

- Libero IDE
- Designer
- Synplify AE, Synplify Pro AE, Identify AE Instrumentor and Debugger, Symphony HLS AE
- ModelSim AE
- WaveFormer Lite
- Actel DirectCore IP Cores

12. Which software tools will work without a license?

- SoftConsole
- FlashPro
- Silicon Sculptor
- Silicon Explorer

13. What license types are available?

Floating License

- Sets up a License Server that hosts the License.dat file and listens on a TCP port for a Client that wishes to checkout a license feature
- The server needs to run the license manager and the license daemon programs for each vendor's license features, and does not need to have Libero IDE installed
- The license is tied to the 12-digit MAC ID of the Server computer (8-digit HostID for Solaris Servers).
- The License Server can also checkout a license feature if Libero IDE is installed and the environment variables are set correctly.

Node-Locked Local License

- This license is tied to the computer running the Libero IDE software
- A DISK ID Node-Locked license is tied to the C:\ drive serial number
- A USB Node-Locked license requires 2 USB Dongles (USB Keys) and is tied to the serial number of each dongle
- There is one USB Dongle for Libero IDE, Designer, and ModelSim and another Dongle for Synplicity/Synopsys tools (except Synplify DSP)
- USB Dongles and licenses can be moved from computer to computer, but only the computer that has the dongles attached can use the license

Node-Locked Server Based License

- This is only used for Symphony HLS
- It is tied to the DiskID of the local computer and the software performs the license checkout from a local TCP Port listening for a Software Request.

14. Are the licenses free?

To identify which licenses are free, please refer to:

www.actel.com/products/software/libero/licensing.aspx

Typically Actel offers a Free Libero IDE Gold License which is a Disk ID Node-Locked License that is free for 1 Year and is renewable. There are also 45-day Eval Licenses which are free, but do not allow programming file generation.

15. What is a Node-Locked License?

A Node-Locked license allows you to run the software only on the system that the license is locked to.

A Disk ID Node-Locked license for Windows is locked to the Volume Serial Number of the computer's C:\ drive. The license.dat file should also be located on the C:\ drive.

A USB Dongle Node-Locked license for Windows is locked to the Dongle-ID of the 2 dongles supplied with this license. The computer using this license file must have the 2 USB dongles physically connected to the PC and the required drivers installed..

16. What is a Floating license?

A Floating license requires a License Manager Daemon to be running on a Server and can support multiple users (seats). The license.dat file may be located anywhere on the network that is accessible to the Server. All systems on the network can run the software by correctly setting the LM_LICENSE_FILE environment variable to point to the server. The Daemon monitors the number of users. Each Floating license feature line contains a number that defines how many users may run that feature simultaneously.

17. Which HostID should I use?

The hostid is the unique number assigned to your computer on the network. Make sure you use the hostid to secure your license. The Hostid depends on the type of license you have. It will be the Volume ID of the C:\ drive for DiskID Node-Locked Licenses. It will be the USB Dongle ID for a USB Dongle Node Locked License. It will be the 12-digit MAC ID for the Ethernet Network Interface Card (NIC) when using a Linux or Windows Floating License. Solaris Floating licenses use an 8-digit HostID. For windows C:\ipconfig/all. For Linux try /sbin/ifconfig

18. What happens if I need to change my HostID?

If your HostID has changed, Libero IDE returns a License checkout error. The license file must be regenerated to be tied to the correct HostID. Please contact Actel Customer Service to request license changes. For free licenses a new license can be obtained online and tied to the new HostID.

19. How do I obtain a license?

You can obtain a free license online from the [Software License and Registration System](#) of the Actel Customer Portal. To obtain a license which requires purchase, please contact your local Actel Sales Office: www.actel.com/company/contact/offices/default.aspx

20. What are the restrictions on a Gold license?

A Gold license is free for 1 year and is renewable . It only allows selection of devices with 1.5 Million system gates or less. For example: You can select A3PE1500, but not A3PE3000

The Gold license Supported on Windows OS only and is DiskID Node-Locked

21. What are the restrictions on an Eval license?

Eval Licenses are Free for 45 days.

They allow the evaluation of Libero Platinum License for 45 Days, but programming file generation is disabled

22. My license is about to expire, what should I do to continue using the Libero IDE software?

Libero IDE Gold licenses can be renewed NO MORE THAN 14 DAYS IN ADVANCE OF THE EXPIRATION DATE by the license holder via their respective Web Portal Account's License and Registration section. Locate the software ID of the expiring license and click Renew.

If the license is a purchased license, please contact your local Actel Sales Office as listed on the webpage: www.actel.com/company/contact/offices/default.aspx

23. How can I obtain the License Server Daemons?

The following floating license DAEMONS are provided as standalone downloads, so they do not have to be extracted from the Libero IDE software. You can download those files from the bottom of the webpage at www.actel.com/products/software/libero/licensing.aspx

You are still required to obtain a license for the respective server. Free 45 day evaluation licenses are available online. 1 year licenses are available for purchase from your local Actel Sales representative.

24. Can I use a Node-Locked license on a remote terminal?

Node-Locked Licenses do not support operation over the Windows Remote Desktop Protocol (RDP); you will get a license checkout error. Due to contract obligations with our Third-Party Software Vendors (Synopsys and Mentor Graphics), Node-Locked Licenses must be used on the computer to which they are locked.

Alternatively, if you are using only Libero IDE and Designer software, you can use the Node-Locked License over a Virtual Network Connection (VNC). Please refer to the document at www.actel.com/documents/Libero_Remote_Access.pdf

25. What are Floating License Seats?

A seat of a floating license allows 1 user to check out the license at a time. If your floating license is needed by multiple users, you will need to purchase incremental floating license seats. Refer to the following webpage for the necessary part numbers:

www.actel.com/products/software/libero/licensing.aspx

26. Do I need a new license for each version of Libero IDE installed on my computer?

No. The License Files are backwards compatible, but you will need a license file generated for the most recent major release of Libero IDE running on your computer. For example, when Libero IDE v9.0 was released, it required users to obtain a Libero IDE v9.0 License file.

27. How can I get an Actel DeskTop license?

Unfortunately, Actel no longer has the ability to generate licenses for the obsolete Actel Desktop software.

28. How many seats can I have on a node-locked license?

Actel only issues one seat per Node-Locked license.

Software Installation Questions

29. Can I install the Libero IDE Service Packs to get the complete software installation?

The Libero IDE Service Packs are only add-on installations to the Libero IDE Base Version. Make sure that the base version is installed first then update it with the service pack. For example, to use Libero IDE v8.6 SP1, Libero IDE v8.6 must first be installed before SP1 can be installed.

30. I cannot find the Actel device I need in the Installation Components list. Why?

This is likely because the device you are targeting is considered a Legacy Device and thus you must select the Legacy Products to be installed during the Libero IDE Installation (as shown in the figure below).

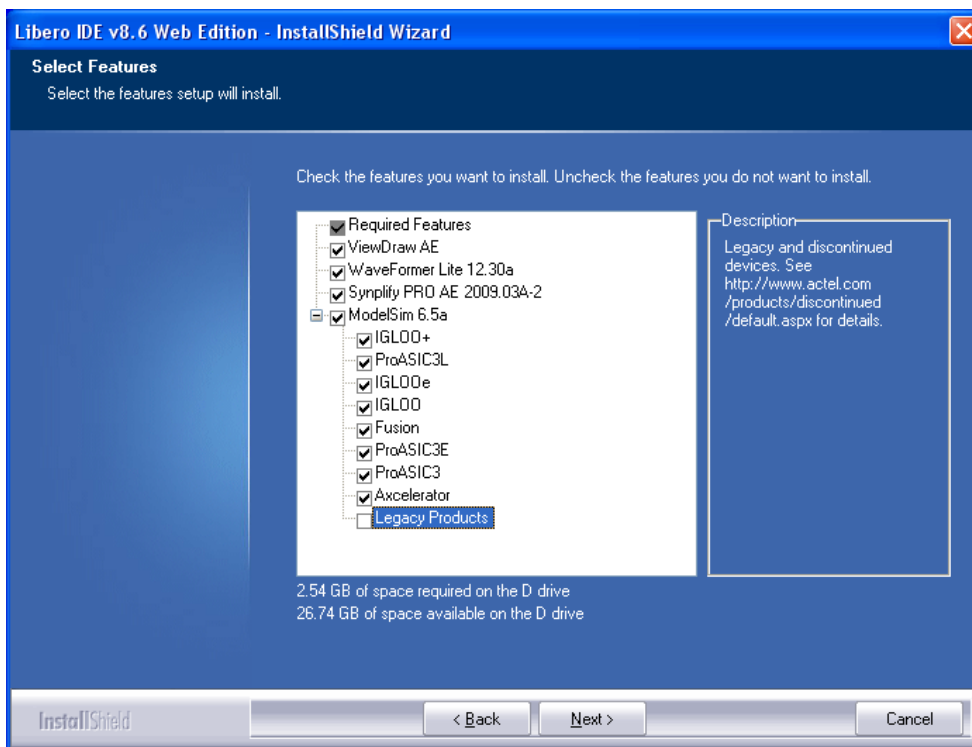


Figure 1: Libero Device List During Installation

31. Can the Libero IDE be installed in any drive or folder?

Yes, you can install Libero IDE in any drive or folder. Please ensure the installation path used for each installation is unique and has not been used previously.

32. The Libero IDE Installer says I have registry errors; how can I fix them?

This message indicates that there are references to Libero IDE Software in the Windows Registry and therefore the Libero IDE Installer will not let you run the installer until the registry is cleaned up and the software is completely uninstalled.

Refer to the Actel website for complete on how to scrub Libero IDE from your machine. Once complete, try running the installer again. If it still does not work then, download a registry cleaner utility and try cleaning your registry.

One example of a registry cleaner program can be found at www.ccleaner.com/download. Not that Actel does not endorse or recommend any specific registry cleaning tool and is not liable for any errors that occur while you are modifying the Windows registry..

33. How can I uninstall the Libero IDE software?

Run the Libero IDE Uninstaller from the Actel Libero Start Menu Group or from the Windows Control Panel Add/Remove Software Utility. If that does not work and it cannot be uninstalled, then please refer the following webpage to uninstall the Libero IDE software www.actel.com/kb/article.aspx?id=K18794 .

34. Can I have more than one version of Libero IDE installed on the same computer?

Yes, you can install different versions on the same computer, but you must install each version in a different folder.

35. The Libero IDE Installer closes before the installation is complete, what can I do?

This issue typically requires that you contact Actel Technical Support for debugging assistance. Possible causes include:

- A corrupted/incompletely downloaded Libero IDE installer
- A conflict caused by security software actively running and accessing files also being used during the Libero IDE installation process
- Insufficient User Privileges to complete the installation
- A corrupted Windows registry

36. Does Actel provide a silent installer for Libero IDE?

No, we do not have a silent installer for Libero IDE.

37. Do I need Administrative Privileges to install Libero IDE?

Yes, must have Administrative Privileges to install Libero IDE and for the first launch of the Libero IDE.

Software Startup Questions

38. Why can't I select the required Actel Device in the New Project Wizard?

While installing Libero IDE you may not have selected the particular device family. Also consider that if you are using a Libero IDE Gold License, devices with more than 1.5 Million System Gates will not be available for selection.

39. How do I get Libero IDE to launch on Linux?

Launch Libero IDE using the following command

```
<Libero_Installation_Folder>/Libero/bin/libero.
```

Please refer to the Libero Installation User's Guide for additional tips to launch Libero IDE on Linux.

www.actel.com/documents/install_ug.pdf

40. The Actel Software does not start when I launch it, what can I do?

This issue typically requires that you contact Actel Technical Support for debugging assistance. Possible causes include:

- A corrupted/incompletely downloaded Libero IDE installer resulting in an incomplete installation
- A conflict caused by security software actively preventing Actel software from starting
- A license setup issue
- A corrupted Windows registry

Software License Setup Questions

41. How do I set up my Floating license (or) Node-Locked license?

Please refer to the Libero Installation User's Guide for license setup instructions.

www.actel.com/documents/install_ug.pdf

42. Which computer should be the License Server?

The License Server can be a Windows, Linux or Solaris Computer. The License Server must be accessible to all other computers on the same Local Area Network wishing to checkout a Libero IDE Floating License. Although the License Server can be a Solaris computer, the Actel Libero IDE can only be run on Windows or Linux computers.

43. Should I install Libero IDE on the License Server?

You do not have to install Libero IDE on the License server. The License Daemon executables can be downloaded from the Actel Website. The only reason to install Libero IDE on the License Server would be in the event that a user on the License Server needs to run Libero IDE directly from the Server Computer.

44. How do I start the License Server?

Please refer to the Libero Installation User's Guide for License Setup Instructions.

www.actel.com/documents/install_ug.pdf

Once the License Server has been set up, start it by logging into the server machine and entering the command:

```
<path.to.actel.installation>/bin/lmgrd -c <path_to_license.dat/license.dat>
```

45. How do I start the License Server and have the output saved in a Log File?

To save the License Server output to a logfile rather than having the text output directly to the terminal on the License Server, you must start the server using the `-l` flag to the `lmgrd` command and specify the path and name of a Logfile to create or append to. For example:

```
<path.to.actel.installation>/bin/lmgrd -c <path_to_license/license.dat> -l  
<desired_path/logfile.txt>
```

46. My License Server has multiple licenses for the same software, can these licenses be merged?

To combine license server files for the same product:

1. Concatenate the files
2. Remove the duplicate SERVER and VENDOR lines

Note that expiration dates can be different and the number of seats can be different.

Although the files can be concatenated, duplicate license features for the same software will not be read as additional licenses (they will not be accumulated). To have the same features be accumulated, the FEATURE line is replaced by an INCREMENT line. If a license server file has a FEATURE line instead of an INCREMENT line, you must generate a new license for that software feature.

47. Do I need Administrative Privileges to modify an Environment Variable?

Yes, must have Administrative Privileges to modify an Environment Variable.

48. I've followed the License Setup Instructions, but still get a Checkout Error, what can I do?

Please refer the License Troubleshoot document to resolve the problem

www.actel.com/documents/license_troubleshooting_FAQ.pdf.

Actel is the leader in low power and mixed signal FPGAs and offers the most comprehensive portfolio of system and power management solutions. Power Matters. Learn more at <http://www.actel.com>.



Actel Corporation

2061 Stierlin Court
Mountain View, CA
94043-4655 USA
Phone 650.318.4200
Fax 650.318.4600

Actel Europe Ltd.

River Court, Meadows Business Park
Station Approach, Blackwater
Camberley Surrey GU17 9AB
United Kingdom
Phone +44 (0) 1276 609 300
Fax +44 (0) 1276 607 540

Actel Japan

EXOS Ebisu Building 4F
1-24-14 Ebisu Shibuya-ku
Tokyo 150, Japan
Phone +81.03.3445.7671
Fax +81.03.3445.7668
<http://jp.actel.com>

Actel Hong Kong

Room 2107, China Resources Building
26 Harbour Road
Wanchai, Hong Kong
Phone +852 2185 6460
Fax +852 2185 6488
www.actel.com.cn