



Configuring Serial Terminal Emulation Programs

Configuring Serial Terminal Emulation Programs: An Introduction

The serial terminal emulation program is used for the serial communication between the host computer and an embedded system (Target). It is mainly used as a user interface for debugging embedded system. It is also used for sending commands, displaying result, loading firmware, logging result, etc.

This document explains how to configure serial terminal emulation programs such as HyperTerminal, Tera Term, and PuTTY on Windows XP operating system. The HyperTerminal is part of Windows XP operating system but it is no longer part of Windows Vista or Windows 7 operating systems. The open source and free serial terminal programs like Tera Term and PuTTY can also be used as a replacement for HyperTerminal in Windows Vista and Windows 7 operating systems.

The Tera Term can be downloaded using the following link:

<http://hp.vector.co.jp/authors/VA002416/teraterm.html>

The PuTTY can be downloaded using the following link:

www.chiark.greenend.org.uk/~sgtatham/putty/download.html

HyperTerminal

Configuring HyperTerminal

1. Click the Windows start menu. Select **All Programs > Accessories > Communications** and click the HyperTerminal program (Figure 1). This opens HyperTerminal.

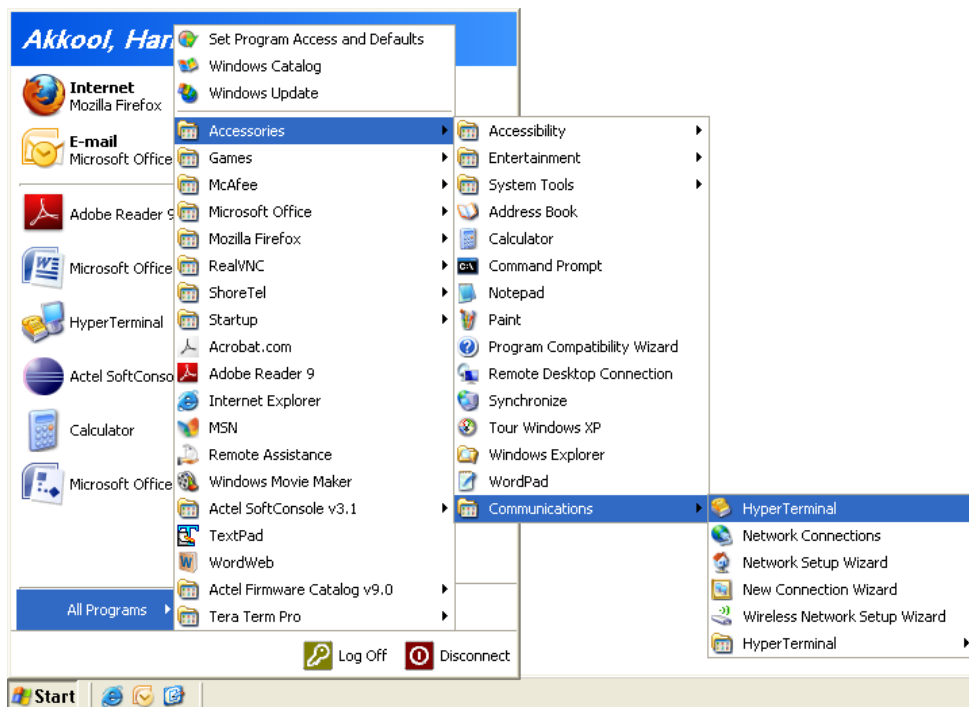


Figure 1: Invoking HyperTerminal

- The Connection Description window is displayed (Figure 2). Enter a name and choose an icon for the connection. For example, type **Serial Console** as the name of the new HyperTerminal session and click **OK**.

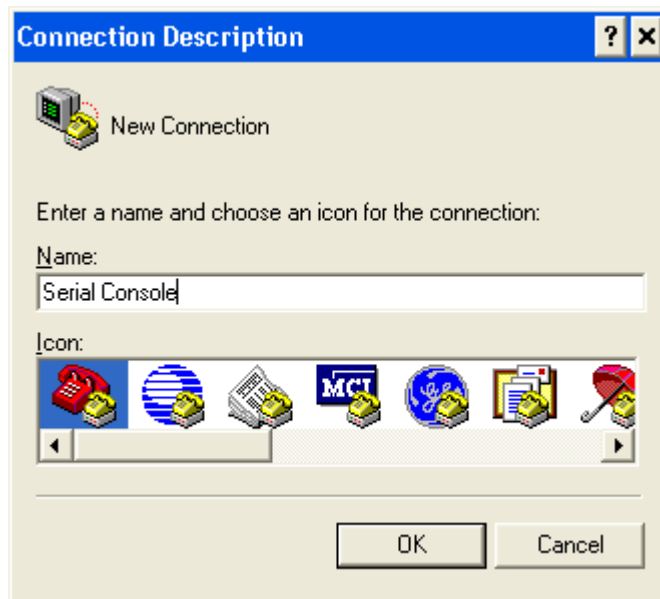


Figure 2: HyperTerminal Connection Description

- The Connect To window is displayed. Select a **COM** port from the drop-down list. For example, COM3 (Figure 3).



Figure 3: HyperTerminal Port Selection

- The COM3 Properties window is displayed. Select the following settings (Figure 4):

Bits per second = 57600

Data bits = 8

Parity = None

Stop bits = 1

Flow Control = None

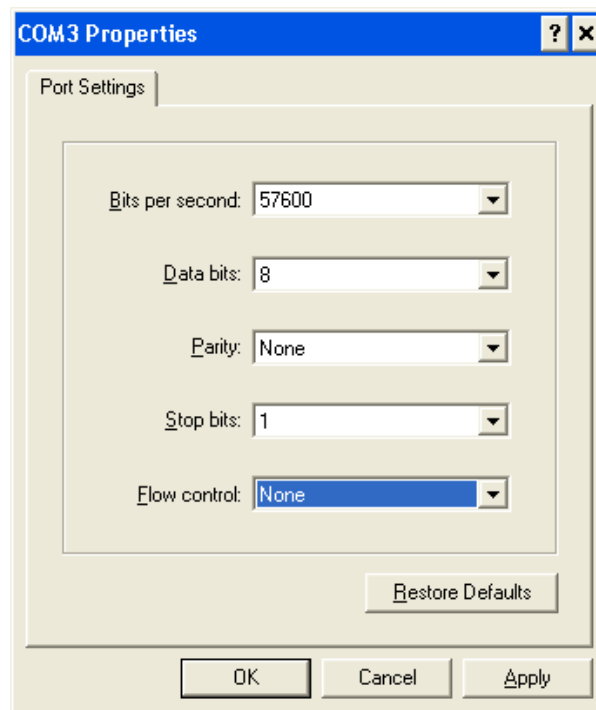


Figure 4: HyperTerminal Port Settings

5. Select **File > Properties** in the HyperTerminal window. Choose the **Settings** tab (Figure 5).

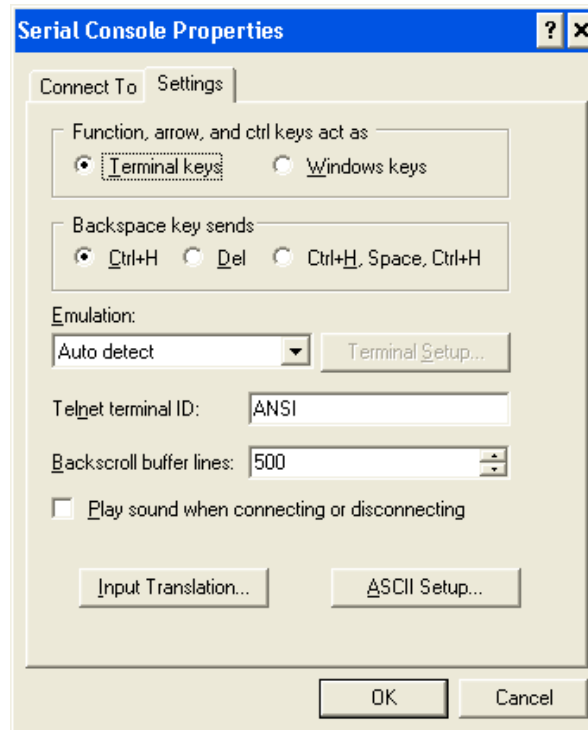


Figure 5: HyperTerminal Properties

6. Click the **ASCII Setup** button. Select the check box labeled **Send line ends with line feeds** and **Echo typed characters locally** (Figure 6).

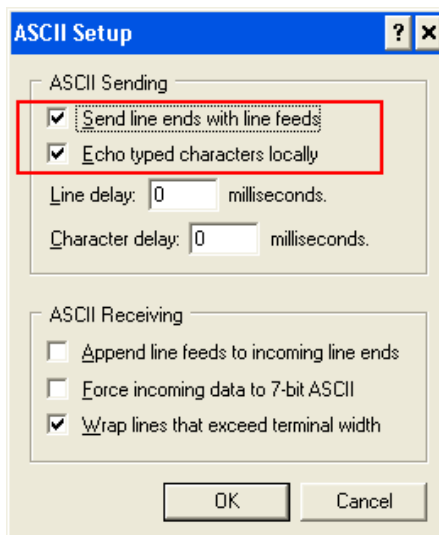


Figure 6: ASCII Character Settings

7. Save the settings for later use. Select **File > Save As** Session files.

Tera Term Pro

Configuring Tera Term Pro

1. After installing Tera Term Pro, click the Windows start menu. Select **All Programs > Tera Term Pro** and click the Tera Term Pro program (Figure 7). This displays the Tera Term Pro screen.

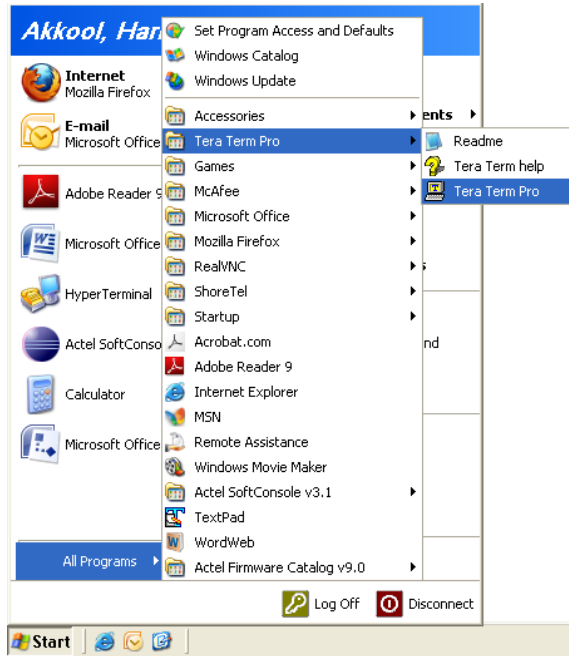


Figure 7: Invoking Tera Term Pro

2. The Tera Term: New connection window is displayed (Figure 8). Select **Serial** radio button.

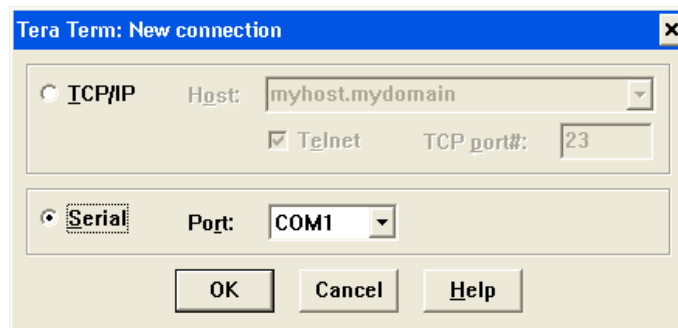


Figure 8: Tera Term New Connection Window

3. Select a COM port from the drop-down list and click **OK**. For example, COM3 (Figure 9).

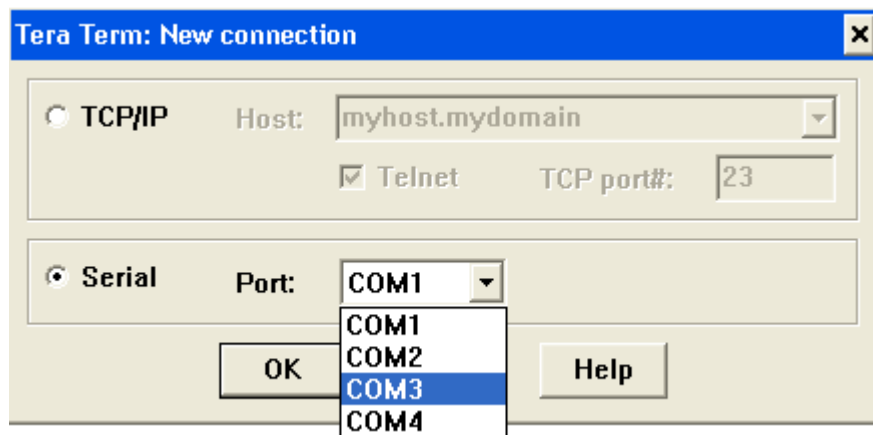


Figure 9: Tera Term Port Selection

4. Select **Setup > Serial port** in the Tera Term window. The COM3 Serial port setup window is displayed. Select the following settings (Figure 10):

Baud rate = 57600
 Data = 8 bit
 Parity = None
 Stop = 1 bit
 Flow Control = None

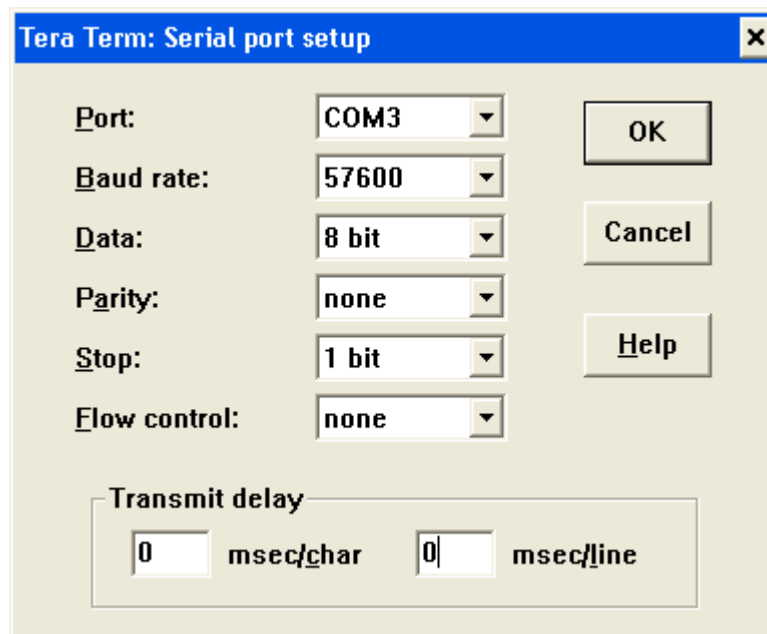


Figure 10: Tera Term Serial Port Setup

5. Select **Setup > Terminal** in the Tera Term window. The Terminal setup window is displayed (Figure 11).

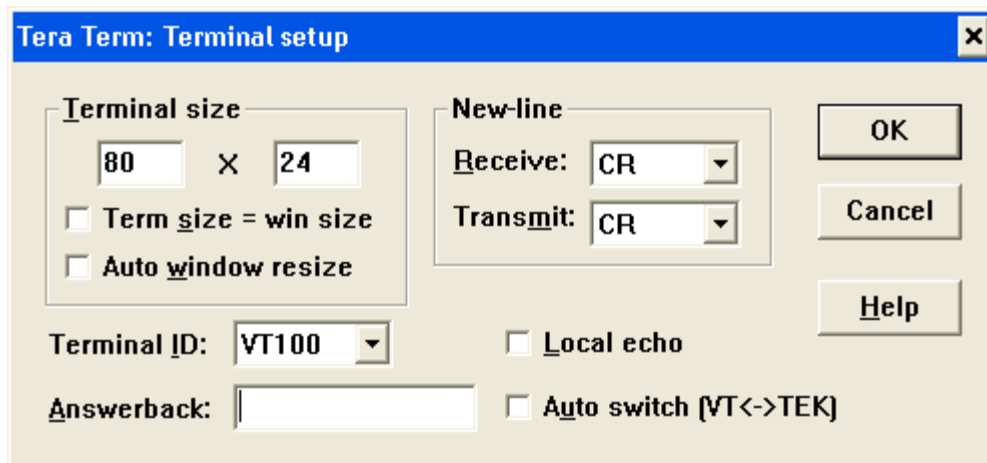


Figure 11: Tera Term Terminal Setup

6. Select the check box labeled **Local echo** and select **CR+LF** from Transmit drop-down list under New-Line menu (Figure 12).

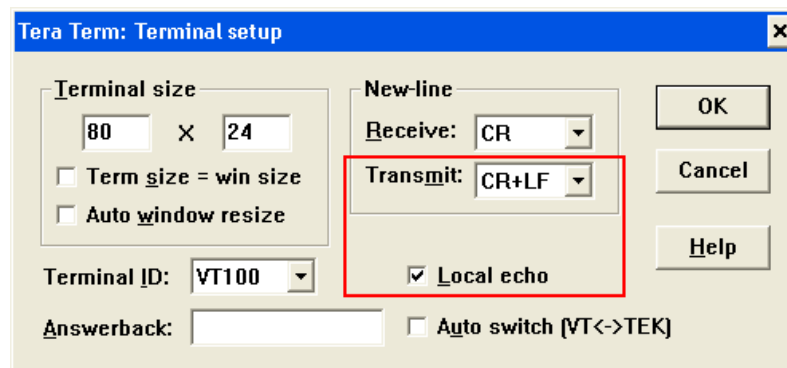


Figure 12: Tera Term Terminal Setup

7. Save the settings for later use. Select **Setup > Save setup**.

PuTTY

Configuring PuTTY

1. Click the **putty.exe**. This opens PuTTY Configuration window (Figure 13).

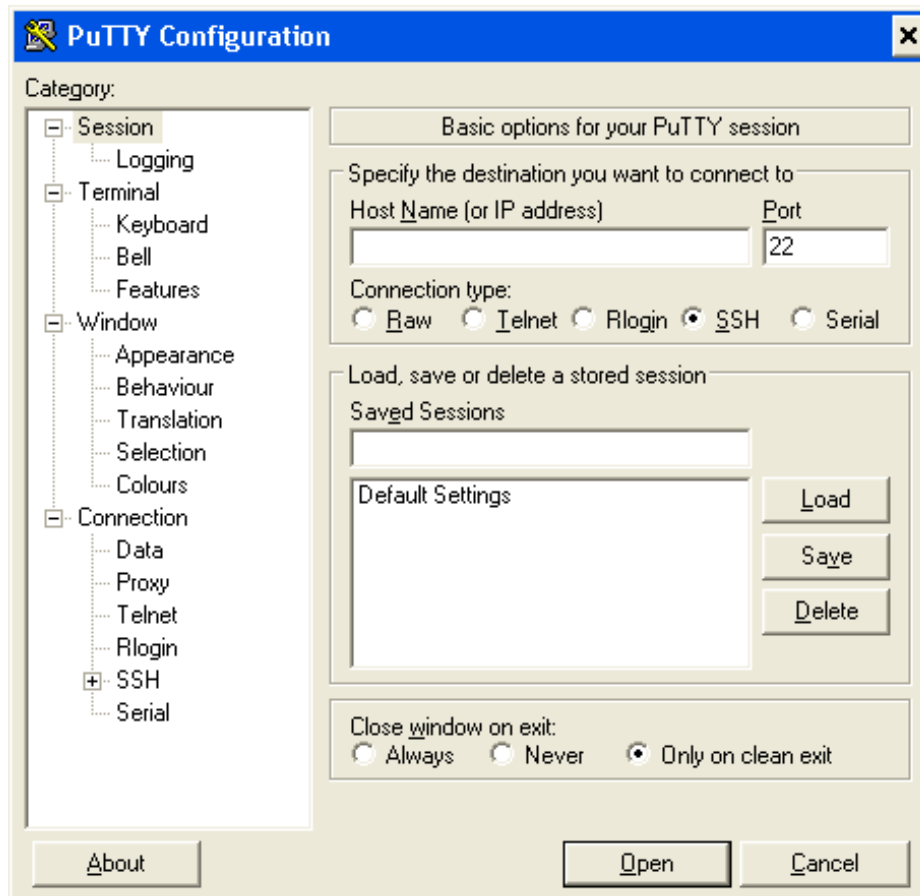


Figure 13: PuTTY Configuration Window

2. Select **Category > Connection > Serial** in the PuTTY Configuration window. The Serial Line configuration window is displayed. Select the following settings (Figure 14):

Speed (baud) = 57600

Data bits = 8

Stop bits = 1

Parity = None

Flow Control = None

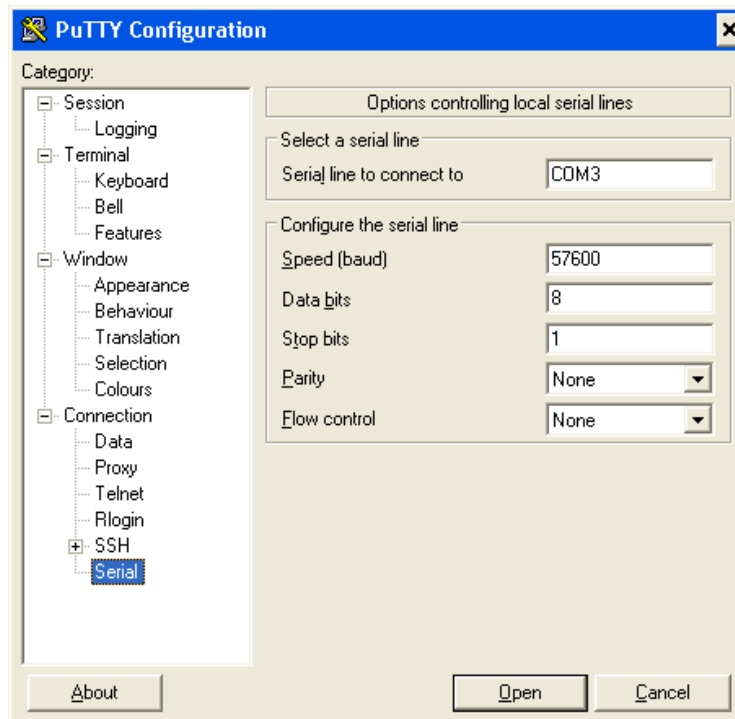


Figure 14: Serial Line Configuration

3. Select **Category > Terminal** in the PuTTY Configuration window. The terminal emulation configuration window is displayed. Select **Force on** radio button under **Local echo** menu and Select the check box labeled **Implicit CR in every LF** under Set various terminal options menu (Figure 15).

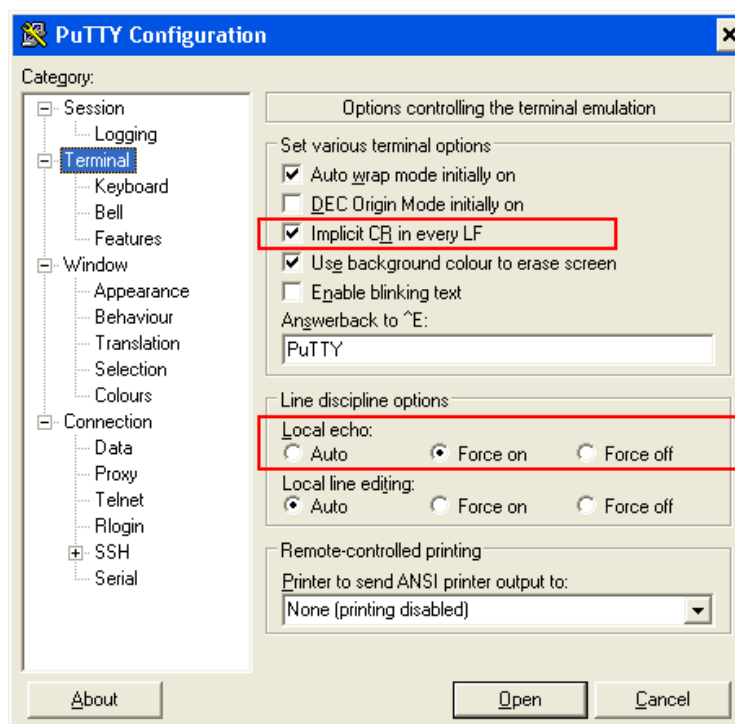


Figure 15: Terminal Configuration

4. Select **Category > Session** in the PuTTY Configuration window. The basic options for PuTTY session appear. Select **Serial** radio button under Connection type menu (Figure 16) and click **Open**.

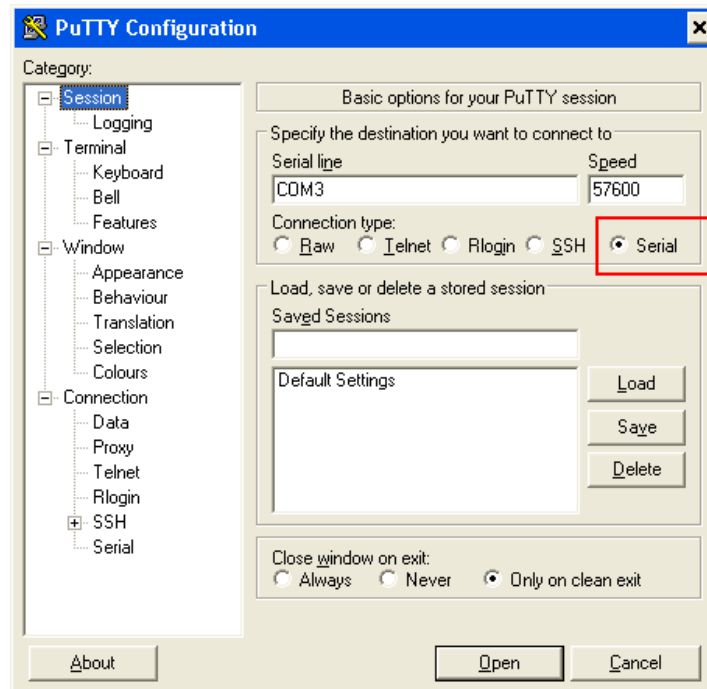


Figure 16: Basic Options for a Session

5. Save the session for later use. Right-click the PuTTY title bar and click change settings (Figure 17).

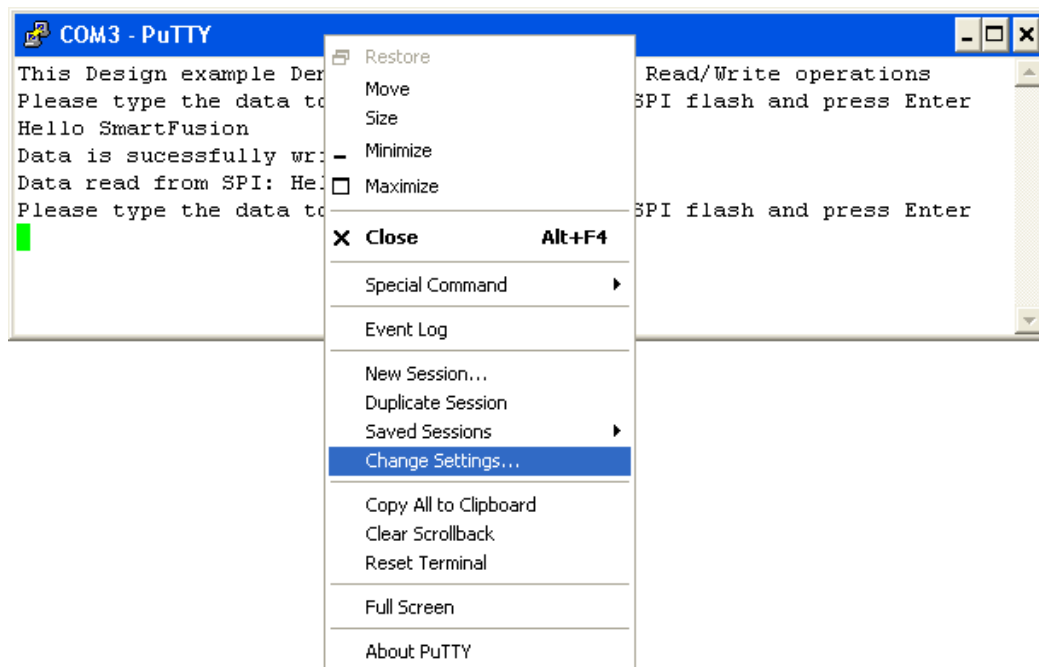


Figure 17: PuTTY Current Session Settings

Note: Press **Ctrl+J** instead of **Enter**.

Actel is the leader in low-power and mixed-signal FPGAs and offers the most comprehensive portfolio of system and power management solutions. Power Matters. Learn more at <http://www.actel.com> .



Actel Corporation

2061 Stierlin Court
Mountain View, CA
94043-4655 USA
Phone 650.318.4200
Fax 650.318.4600

Actel Europe Ltd.

River Court, Meadows Business Park
Station Approach, Blackwater
Camberley Surrey GU17 9AB
United Kingdom
Phone +44 (0) 1276 609 300
Fax +44 (0) 1276 607 540

Actel Japan

EXOS Ebisu Building 4F
1-24-14 Ebisu Shibuya-ku
Tokyo 150, Japan
Phone +81.03.3445.7671
Fax +81.03.3445.7668
<http://jp.actel.com>

Actel Hong Kong

Room 2107, China Resources Building
26 Harbour Road
Wanchai, Hong Kong
Phone +852 2185 6460
Fax +852 2185 6488
www.actel.com.cn